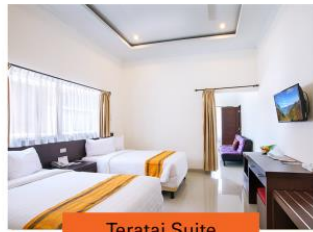


## Landscape of Toba In Parapat

Lake Toba is the world's largest inland lake and one of Indonesia's premier tourist attractions. Toba is situated about 2.800 feet above sea level in a misty mountain region of great scenic beauty. Three hour's drive from the regional capital of Medan, the lakeside community of Parapat is the garden KHAS Parapat Hotel. From the comfort of your beautifully appointed room, take in a panoramic vista of the lake and historic Samosir island at its center. Ferries depart regularly on sightseeing tours around the lake and there are nature trails to follow, a perfectly preserved tribal village to visit, a wealth of ethnic handicrafts to buy, and a lake home. Local and International cuisine, entertainment, swimming, sailing, first-class service, and amenities provide at KHAS Parapat Hotel are an essential part of the Toba experience.



Teratai Suite



Superior New



Superior



Junior Suite



President Suite



Family New



KHAS Parapat Hotel provides 6 types of Guest rooms, there are 25 Superior rooms, 23 Superior New rooms, 8 Family New rooms, 4 Family rooms, 21 Deluxe Rooms, 16 Junior suite rooms, 3 Teratai suite rooms, 2 President suite rooms, total of 102 rooms.



### ROOM RATE

President Suite	Rp. 7.550.000,-
Teratai Suite	Rp. 3.120.000,-
Junior Suite	Rp. 2.660.000,-
Family New	Rp. 2.800.000,-
Family	Rp. 2.150.000,-
Deluxe	Rp. 1.910.000,-
Superior New	Rp. 1.560.000,-
Superior	Rp. 1.215.000,-

Above Rate included Breakfast for 2 Persons (President Suite & Family Room for 4 Persons), 21% Tax & Service

### Facilities



Meeting Room	Size (sqm)	Roundtable (Pax)	Classroom (Pax)	U-Shape (Pax)	Theatre (Pax)
Simalungun Hall	328.6	150	150	100	400
Toba Hall	320	120	100	70	200
Marihat Hall	245.2	80	80	45	150

Type of room	Size (sqm)
President Suite	114.6
Teratai Suite	48.0
Junior Suite	49.5
Family New	46.7
Family	46.7
Deluxe	45.5
Superior New	33.5



Simalungun Hall

### MEETING PACKAGE

#### FULL BOARD RESIDENTIAL

Single Supplement	Rp. 1.100.000,-/p/n
Twin Share	Rp. 750.000,-/p/n

Included : Superior Room, Breakfast, Lunch, Dinner, 2x Coffee Break, 21% Tax & Service

#### ONEDAY MEETING Rp. 475.000,-/p

Included : Lunch, Dinner, 2x Coffee Break, 21% Tax & Service

#### HALFDAY MEETING Rp. 275.000,-/p

Included : Lunch or Dinner, 1x Coffee Break, 21% Tax & Service

#### FULLDAY MEETING Rp. 325.000,-/p

Included : Lunch or Dinner, 2x Coffee Break, 21% Tax & Service

Above Package Included : Meeting Room, LCD Projector, Screen, Sound System, Mineral Water, Candy, Memopad, Ballpoint